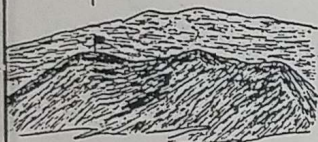
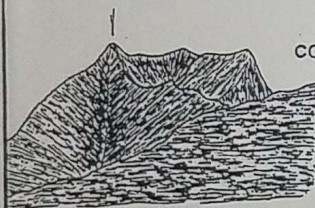


### VISUALES



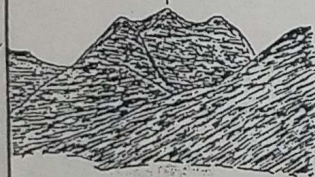
V1

**CERRO NEGRO (I.G.M.)**  
 ANG. HORIZ. = 00,0000 g.  
 ANG. CENIT. = 98,3630 g.  
 AZ. UTM = 266,6945 g.  
 DIST. APROX. = 2,80 kms.



V2

**CO. PANTON DE ALISTE**  
 ANG. HORIZ. = 53,2960 g.  
 ANG. CENIT. = 96,4460 g.  
 AZ. UTM = 319,9905 g.  
 DIST. APROX. = 16,50 kms.



V3

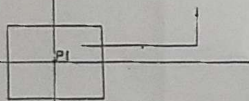
**CERRO TRIDENTE**  
 ANG. HORIZ. = 208,7970 g.  
 ANG. CENIT. = 95,3230 g.  
 AZ. UTM = 75,4915 g.  
 DIST. APROX. = 13,00 kms.

### RELACION DE AREAS

ESCALA 1: 100,000

AREA MANIFESTADA  
 SOLICITADA Y MENSURADA

7.088.750.000



300,000

7 090 000 N

DIST UTM = 1.500 Mts  
 AZ. UTM = 00,00 Gds.

3.500

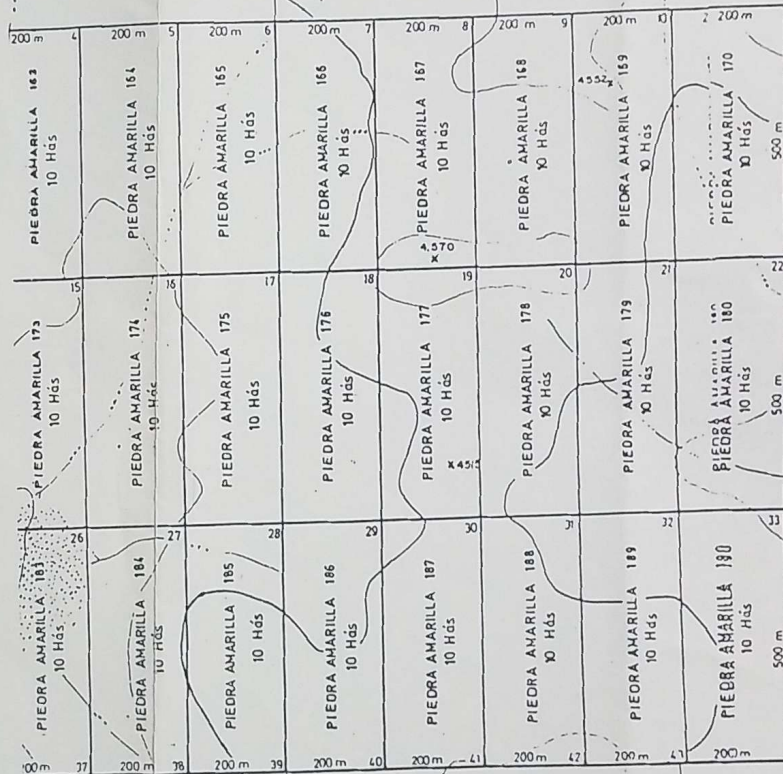
7.088.000 N

34

000 E

DIST. UTM = 2.000 Mts.

AZ. UTM = 100,00 Gds



DIST UTM = 2.000 Mts.

AZ. UTM = 300,00 Gds.

30.000

531.000 E

44

DIST. UTM = 1.500 Mts.